

# NEMESYS HIGH PRESSURE

## High Pressure Syringe Pump



## Precise and pulsation free dosage for high pressure applications up to 250 bar

### Highest precision up to 250 bar

The neMESYS high pressure syringe pumps are made for the precise injection of fluids into high pressure systems or for working with viscous fluids. They bring the approved high precision neMESYS dosing technology into pressure ranges of up to 250 bar.

### Technology

The powerful, highly precise and PID controlled drive unit of this high pressure pump ensures an extremely smooth movement of the syringe piston. This enables the pulsation-free generation of precise fluid streams in the range of nanolitres and the dosage of micro volumes. By using rugged stainless steel syringes the force of the drive unit can be converted into pressures up to 250 bar.



High pressure syringes



### Your benefits at a glance

- pulsation-free generation of fluid streams in the range of nanolitres
- precise dosage of viscous fluids
- support of high pressure valves for continuous delivery of fluid for virtually unlimited periods of time
- dosage with pressures up to 250 bar
- integrated pressure sensor up to 250 bar
- syringe clamps for 5 different high pressure syringes
- up to 127 pumps can be chained together
- can be combined with neMESYS high precision syringe pumps for low pressures
- comprehensive graphical userinterface

2009-03-26

cetoni GmbH  
Am Wiesenring 6  
07554 Korbussen  
Germany

Phone: + 49 (0) 36602 338-0  
Fax: + 49 (0) 36602 338-11  
Mail: [info@cetoni.de](mailto:info@cetoni.de)  
Web: [www.cetoni.de](http://www.cetoni.de)

 cetoni®

# NEMESYS HIGH PRESSURE

## Precision on a mouseclick



## Comprehensive software support and easy to integrate into customized applications

### Windows Software neMESYS UserInterface

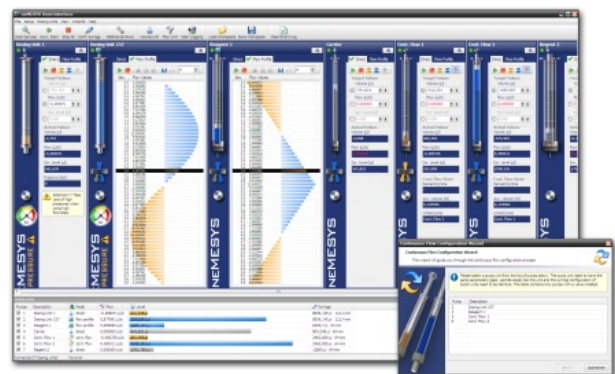
With the neMESYS UserInterface software you have full control over all parameters of your neMESYS high pressure syringe pumps - no matter if you only would like to dose highly precise volumes or if you need more advanced functionality like manual interactive flow control or generation of continuous flows over a virtually unlimited period of time. The actual values of the integrated pressure sensors will be displayed all the time and the over-pressure action is user configurable.

### Highlights

- automatic detection of connected dosing units
- measurement and display of pressure
- configurable over-pressure actions
- visualisation and control of high-pressure valve
- generation and editing of complex flow profiles
- import of flow profile from Excel- or simple text files
- configurable SI units for volumes and flow rates
- generation of continuous flows over a virtually unlimited period of time
- synchronous control of all dosing units
- supports Windows XP, 2000 and Windows Vista

### Integration into custom applications

- Windows 32-Bit DLL (i.e.. for integration into RAD Studio, Visual Studio .NET, Visual Basic, Matlab, Agilent VEE)
- LabVIEW Integration Kit
- RS232-Library (i.e. for microcontroller based devices)
- Low-Level IEC-1131 libraries (i.e. for S7-300, PLC Beckhoff with TwinCat, VIPA PLC)
- implements CANopen device profile DS4Q2 - Drives and Motion Control



### Interfaces

- USB (1.1 and 2.0)
- CAN (max. 1 Mbit/s)
- RS232 (max. 115200 bit/s)

2009-03-26

cetoni GmbH  
Am Wiesenring 6  
07554 Korbussen  
Germany

Phone: + 49 (0) 36602 338-0  
Fax: + 49 (0) 36602 338-11  
Mail: info@cetoni.de  
Web: www.cetoni.de

