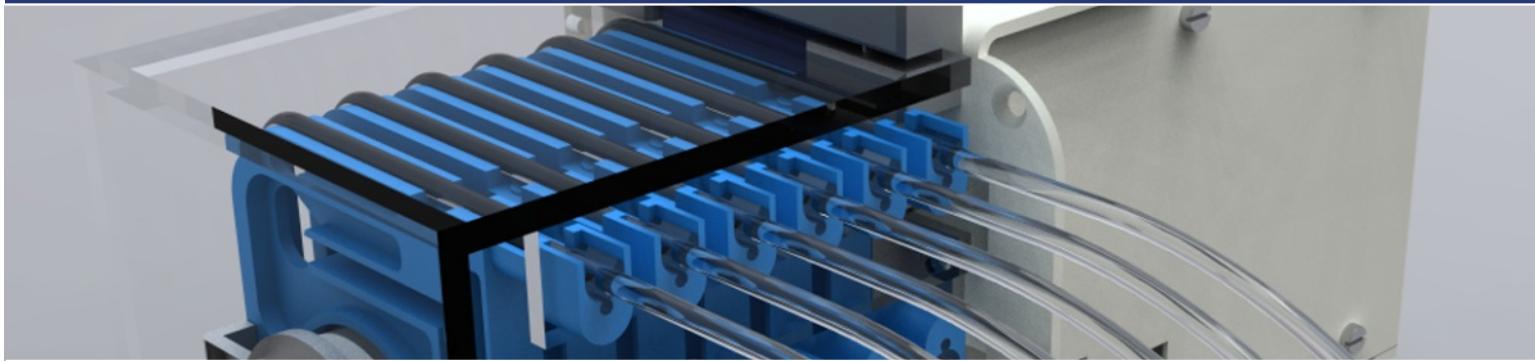


NEMESYS TUBE OEM

Modular OEM tubing pump



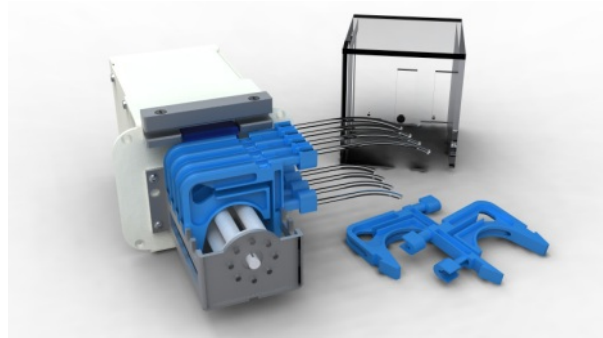
Multi channel OEM tubing pump solution for your application

Advantages

The neMESYS OEM tubing pump combines the approved peristaltic pump technology with the modular and extensible neMESYS drive and bus system from cetoni. This makes it easy to chain up to 32 pumps together for large scale applications and enables a comprehensive software support.

Technology

Because the only part of the pump in contact with the fluid being pumped is the interior of the tube, it is easy to sterilize and clean the inner surfaces of the pump. The use of a tube makes it a relatively low-cost maintenance item compared to other pump types. The neMESYS tubing pump also minimizes shear forces experienced by the fluid, which may help to keep colloids and slurry fluids from separating.



Your benefits at a glance

- up to 32 modules can be chained together
- OEM adaptability, easy integration
- comprehensive software package
- can be combined with neMESYS OEM syringe pumps
- easy to sterilize and clean - no contamination
- economically to maintain
- up to 6 different fluid streams per pump (depends on tube size)
- low shear force - cautious dosage of sensitive fluids
- tubes adjustable to mediums to be pumped
- high repeatability and stability

◀ neMESYS OEM tubing pump

2008-10-09

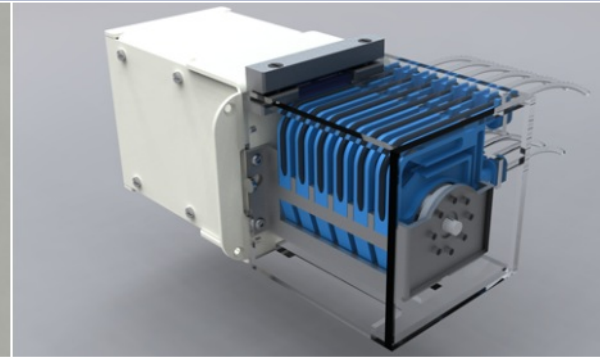
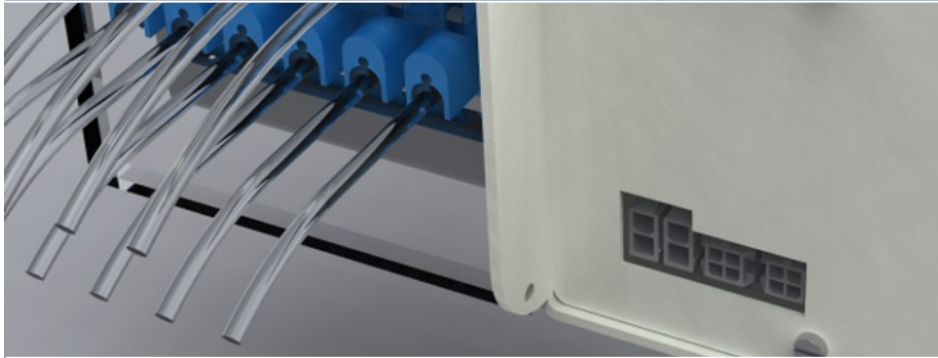
cetoni GmbH
Am Wiesenring 6
07554 Korbussen
Germany

Phone: + 49 (0) 36602 338-0
Fax: + 49 (0) 36602 338-11
Mail: info@cetoni.de
Web: www.cetoni.de



NEMESYS TUBE OEM

Integration made easy



Comprehensive software support and easy to integrate into customized applications

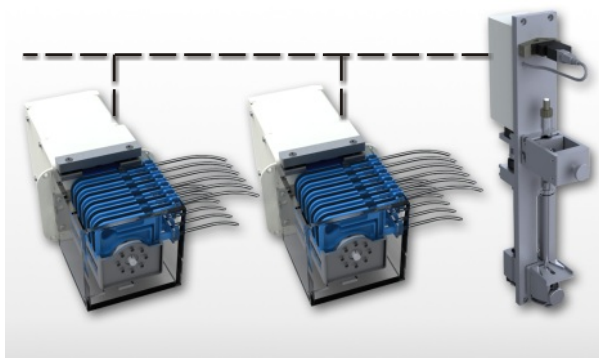
Wide variety of possibilities

The neMESYS OEM tubing pumps offer unprecedented possibilities for integration into your applications. Whether you develop standard Windows applications or you want to program in LabVIEW - we deliver the suitable libraries for those purposes.

The integrated CAN and RS232 interfaces allow control by SPS control units or customized microcontroller applications.

Interfaces

- CAN up to 1 Mbit/s (Standard 500 Kbit/s)
- RS232 up to 115200 bit/s
- USB 2.0 / 1.1 via optional USB-to-CAN interface



neMESYS OEM tubing pumps and neMESYS OEM syringe pump connected to the same bus in one application

Windows 32-Bit DLL

All functions like dosing volumes or generating constant flows are made available by a Windows 32-Bit DLL. This makes the integration into a wide range of development environments easy and cost-saving:

- Codegear RAD Studio & Borland Delphi / C++ Builder
- Microsoft Visual C and Microsoft Visual Studio .NET
- Microsoft Visual Basic
- Mathlab
- Agilent VEE



LabVIEW Integration

The comprehensive library of VIs makes embedding of the neMESYS OEM tubing pumps into your LabVIEW environment easy as a child's play. There are ready-to-use VIs for all functions.



CANopen (DS402)

The pump implements the CANopen device profile DS402 "Drives and Motion Control". Each single pump drive can be accessed by CANopen applications in a standardized way via the integrated CAN interface.



2008-10-09

cetoni GmbH
Am Wiesenring 6
07554 Korbussen
Germany

Phone: + 49 (0) 36602 338-0
Fax: + 49 (0) 36602 338-11
Mail: info@cetoni.de
Web: www.cetoni.de

