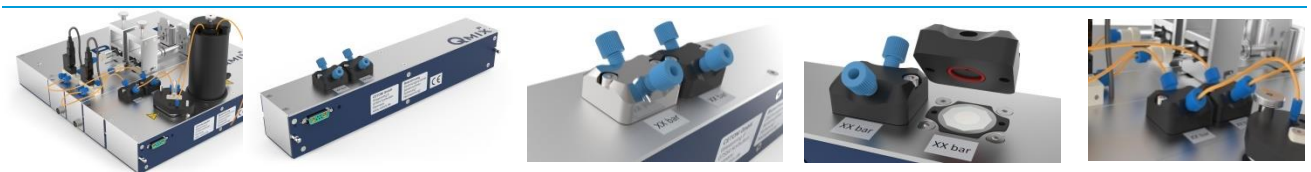


## Qmix P - PRESSURE-MEASURING MODULE

### DESCRIPTION

The Qmix P pressure-measuring module enables a fast and sufficient pressure control to monitor system-pressure values. Therefore the module offers two independent ceramic pressure sensors, which can be customized for different system pressure ranges.



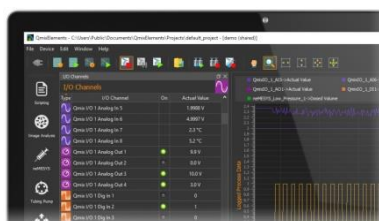
### PRECISE PRESSURE MONITORING

The pressure module provides you with the max. flexibility for the choice of different pressure ratings (2, 5, 10, 20, 50, 100, 200 bar) as well as housing material (PPS / PEEK). The pressure sensors can be used for safety reasons or to realize a pressure-controlled continuous flow mode. Cleaning the sensor unit is easy. Simply rinse it with a rinsing solution or remove the cap to access the sensor.



### AUTOMATION VIA QmixELEMENTS

In combination with QmixELEMENTS you can use Qmix P modules for pressure monitoring to shut down pumps automatically when critical pressure levels are exceeded or undercut.



### MECHANICAL DATA

Weight ..... 750 g  
 Dimensions (L x W x H) ..... 310 x 55 x 70 mm

### ENVIRONMENT

Operating Temperature ..... 0 – 50 °C  
 Storage Temperature ..... -20 – 75 °C  
 Operating Humidity ..... 20 – 90 %, non-condensing  
 Storage Humidity ..... 20 – 90 %, non-condensing

### ELECTRICAL DATA

Peak Power Consumption ..... 1 W  
 Power Supply Voltage (Input) ..... 24 V DC

### INTERFACES

CAN ..... max. 1 Mbit/s  
 Fluidic Connections ..... ¼"-28 UNF

### MODULE PERFORMANCE

Pressure Sensors ..... 2, 5, 10, 20, 50, 100, 200 bar  
 Internal Volume ..... 115 µl- ≤50 bar, 60 µl- ≥100 bar

### WETTED PARTS

Sensor ..... Al2O3  
 Sensor Housing ..... PPS-GF40\* / Steel / PEEK  
 Seal ..... FKM\* / FFKM  
 \*default configuration